

## Blast Chillers-Freezers CW

### Blast Chiller-Freezer Crosswise - 32/28 kg (R452A)

ITEM # \_\_\_\_\_

MODEL # \_\_\_\_\_

NAME # \_\_\_\_\_

SIS # \_\_\_\_\_

AIA # \_\_\_\_\_



727895 (RBF101)

Blast Chiller & Freezer  
32/28kg, compatible with  
10x1/1 GN crosswise Oven -  
R452A

### Short Form Specification

#### Item No.

- Blast chiller/freezer with digital temperature and time display
- For 10 GN 1/1 or 600x400 mm trays
- Load capacity: chilling 32 kg (UK guidelines); freezing 28 kg (UK guidelines)
- Single sensor core probe
- Operating air temperature: +3 -41°C
- Automatic and manual defrosting
- Blast chilling real residual time estimation (A.R.T.E.)
- Turbo cooling function
- Specific cycles for ice cream
- Evaporator with antirust protection
- HACCP and Service alarms with data logging
- Main components in 304 AISI stainless steel
- Internal rounded corners and drain
- Cyclopentane insulation (HCFC, CFC and HFC free)
- Built-in refrigeration unit
- R452a refrigerant gas (HCFC and CFC free)
- Performance guaranteed at ambient temperatures of 40°C

### Main Features

- Blast Chilling cycle: 32 kg from 90°C up to 3°C in less than 90 minutes.
- Blast Freezing cycle: 28 kg from 90°C up to -18°C in less than 240 min.
- Soft Chilling (air temperature -2°C).
- Hard Chilling (air temperature -20°C).
- Freezing (air temperature -36°C)
- Turbo cooling: chiller works continuously at the desired temperature; ideal for continuous production.
- Control unit provides two large displays to read out: time, core temperature, cycle countdown, alarms, service information.
- Two customizable cycles (P1 & P2) for each operating mode, allowing to set the time and air temperature. These programs can be converted into ice-cream specialized cycles (shape maintenance and holding).
- All information related to the different operating models are recorded: date, time, cycle, core temperature, holding temperature, HACCP accordance.
- Performance guaranteed at ambient temperatures of +40°C.
- Holding at +3 °C for chilling or -36 °C for freezing, automatically activated at the end of each cycle, to save energy and maintain the target temperature (manual activation is also possible).
- Single sensor core probe as standard.
- Remaining time estimation for probe-driven cycles based on artificial intelligence techniques (ARTE) for an easier planning of the activities.

### Construction

- High density polyurethane insulation, 60 mm thickness, HCFC free.
- Ventilator swinging hinged panel for access to the evaporator for cleaning.
- No water connections required.
- Waste water can be plumbed into drain, but can also be collected in an optional waste container.
- Environmentally friendly: R452a as refrigerant gas.
- Built-in refrigeration unit.
- Removable magnetic door gasket with hygienic design.

### Included Accessories

- 1 of 1 single-sensor probe for blast chiller and blast chiller&freezers PNC 880213

### Optional Accessories

- Kit for HACCP advanced connection for LW and CW blast chiller&freezer PNC 880183 ☐
- 3-sensor probe for blast chiller and blast chiller/freezers PNC 880212 ☐
- Rilsan grid 600x400mm PNC 880864 ☐

APPROVAL: \_\_\_\_\_

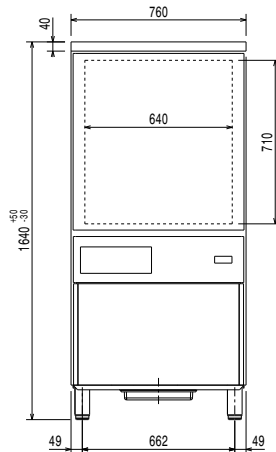
- Plastic coated grid, 1/1GN PNC 881061 ☐
- 4 wheels for blast chillers and blast chiller/freezers PNC 881097 ☐
- Roll-in guide runners for 28 kg blast chillers and blast chiller&freezers 1/1GN PNC 881518 ☐
- Pair of 1/1GN AISI 304 stainless steel grids PNC 921101 ☐
- 80mm pitch side hangers 10x1/1GN electric oven PNC 922115 ☐
- 80mm pitch side hangers 10x1/1GN gas oven PNC 922116 ☐
- 60mm pitch side hangers 10x1/1GN electric oven (included with the oven) PNC 922121 ☐
- 60mm pitch side hangers 10x1/1GN gas oven (included with the oven) PNC 922122 ☐
- Trolley for 10x1/1GN and 10x2/1GN roll-in rack PNC 922128 ☐
- Trolley for 10x1/1GN roll-in rack PNC 922130 ☐
- Kit HACCP EKIS PNC 922166 ☐
- Kit to convert to 10x1/1GN roll-in rack PNC 922201 ☐



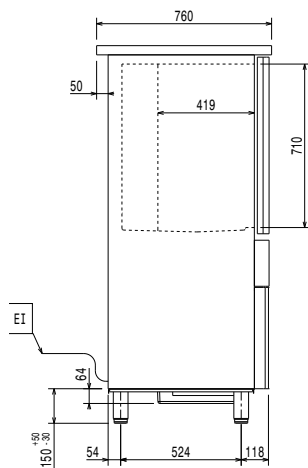
**Electrolux**  
PROFESSIONAL

## Blast Chillers-Freezers CW Blast Chiller-Freezer Crosswise - 32/28 kg (R452A)

Front

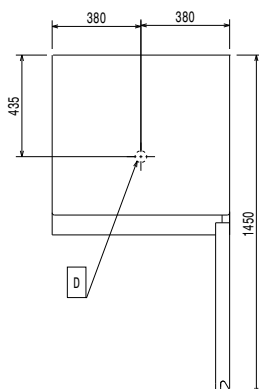


Side



EI = Electrical inlet (power)

Top



### Electric

Supply voltage:

727895 (RBF101)

380-415 V/3N ph/50/60 Hz

Electrical power max.:

2.88 kW

### Installation:

Clearance:

5 cm on sides and back.

Please see and follow detailed installation instructions provided with the unit

### Capacity:

GN:

6 - 1/1 containers

### Key Information:

External dimensions, Width: 760 mm

External dimensions, Height: 1640 mm

External dimensions, Depth: 760 mm

Net weight: 140 kg

Shipping weight: 160 kg

Shipping volume: 1.3 m<sup>3</sup>

### Refrigeration Data

Refrigerant type: R452A

Refrigeration power: 1464 W

Refrigeration power at evaporation temperature: -30 °C

Refrigerant weight: 1500 g

### Product Information (EN17032 – Commission Regulation EU 2015/1095)

Energy consumption, cycle (chilling):

0.095 kWh/kg

Chilling Cycle Time (+65°C to +10°C):

112 min

Full load capacity (chilling):

40 kg

Blast Chillers-Freezers CW  
Blast Chiller-Freezer Crosswise - 32/28 kg (R452A)

The company reserves the right to make modifications to the products without prior notice. All information correct at time of printing.

2020.07.23

